



23tn Excavator and 50V Movax specification



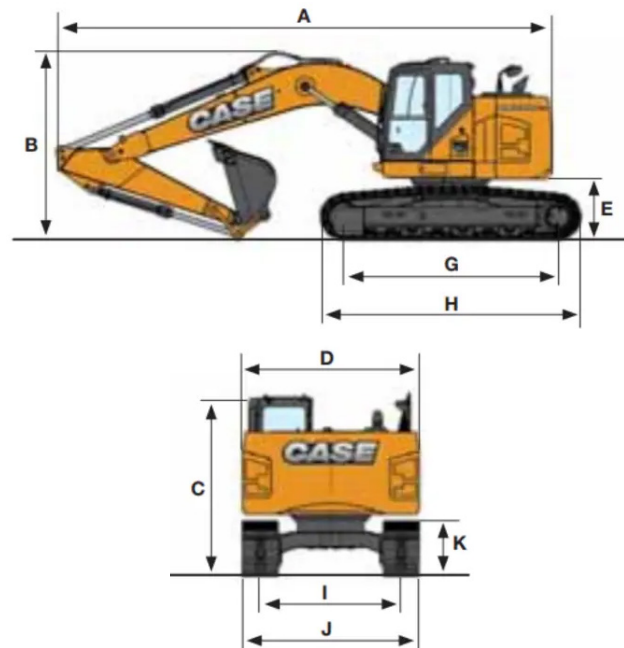
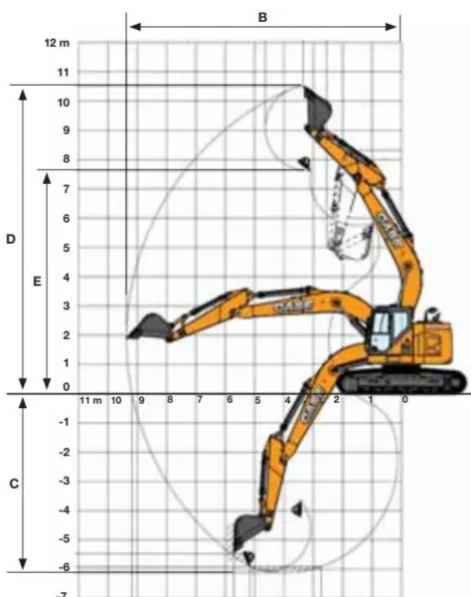
Transport dimensions		
A	Overall length	8,920mm
B	Overall height of boom	3,090mm
C	Overall height of cab	3,040mm
D	Overall width	2,990mm
E	Upper structure ground clearance	1,020mm
F	Minimum ground clearance	440mm
G	Tumbler length	3,660mm
H	Track length	4,470mm
I	Track gauge	2,490mm
J	Overall width of upper structure	2,990mm
	Shoe width	500mm
	Tail swing radius	2,310mm
	Overall height of handrail	3,450 mm

Work ranges		
A	Max reach on ground	9,850mm
B	Dig radius at ground line	9,670mm
C	Max dig depth	6,650mm
D	Max cutting height	10,850mm
E	Max dumping height	7,970mm
	Max depth	6,480mm
	Bucket rotation	177°
	Max vertical wall depth	5,920mm
	Max reach	10,850mm
	Min front slew radius	2,310mm

Case CX235C technical data	
Engine type	Isuzu am/4
Engine power	119kw
Fuel tank capacity	320l
Hydraulic tank reservoir	114l
Total hydraulic system	252l
Operating weight	25,400kg
Ground bearing pressure	5.8 PSI

Compatibility	
Movax SG50v	
Movax DH-15	
Auger torque 35,000 MAX	

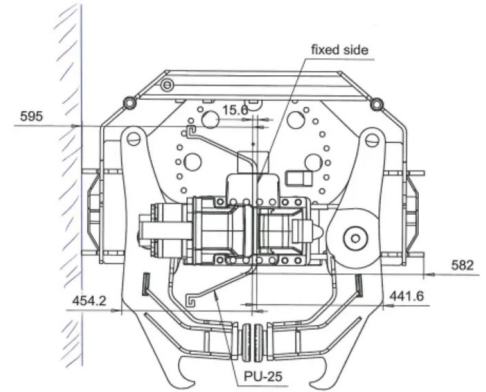
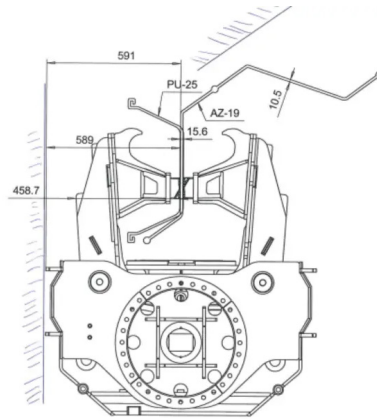
Specifications of the Movax SG-50v





Suitable piles		
Sheet piles	H-beams	Tubes
Width 400-1,200mm	Size H180-H500	Pipe clamps (which are fitted to sheet pile jaws): Ø90 - Ø250 mm
"Depth" 265mm	177°	Tube reducer (which are fitted to tube jaws): Ø193.7 - 610.0 mm
Weight maximum 1,400kg	Weight maximum 1,400kg	Weight maximum 1,400kg
Length up to 18m	Length up to 18m	Length up to 18m

SG-50v Movax Unit technical data	
Weight without adapter	2,260-2,680kg
Height	2,468mm
Depth	1,060-1,383mm
Width	1,192mm
Excavator class	23-30ton
Maximum return pressure	5bar
Pressure settings	350bar
Frequency	2500-3000 1/min
Centrifugal force	500kN
Ground vibration	Low
Resonance free start and stop	Yes
Driving method	Vibration
Swing / tilt angle	360 / 30°



Specifications of the 35,000 max earth drill

35,000 max earth drill technical data	
Torque range	20,510 - 35,323 Nm
Oil pressure range	180 - 310 Bar
Oil flow range	80 - 225 lpm
Speed range	11 - 31 rpm
Unit weight	442 k
Output shaft std	110mm (4.33") Square
Output shaft opt	100mm (3.94") Square 130mm (5.125") Square

