



## Volvo EC380EL, Movax SG-75v



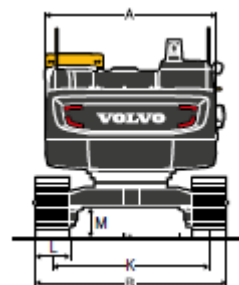
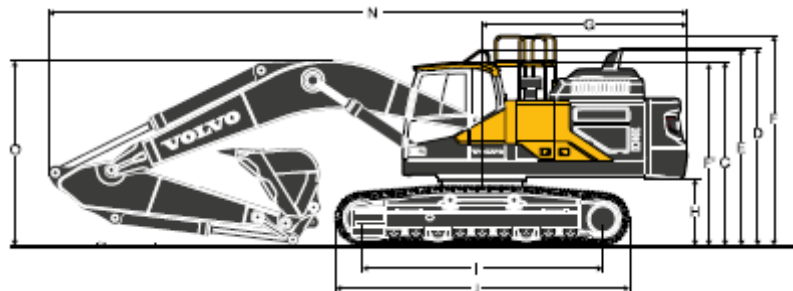
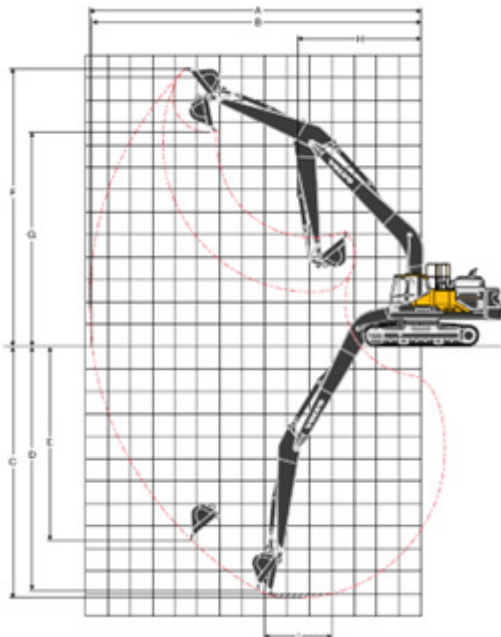
Dimensions		
A	Overall width of upper structure	2,990mm
B	Overall width	3,460mm
C	Overall height of cab	3,220mm
D	Overall height of diffuser	3,470mm
E	Overall height of handrail	3,440mm
F	Overall height of guardrail (unfolded)	3,685mm
F	Overall height of guardrail (folded)	3,215mm
G	Tail swing radius	3,600mm
H	Counterweight clearance	1,555mm
I	Tumbler length	4,240mm
J	Track length	5,180mm
K	Track gauge	2,740mm
L	Shoe width	700mm
M	Minimum ground clearance	500mm
N	Overall length	11,225mm
O	Overall height of boom	3,275mm

Compatibility
Movax SG75v
Movax DH-25
Movax MPL300

Volvo EC380EL technical data	
Engine type	D13J
Engine power	226kw
Fuel capacity	620l
Hydraulic oil capacity	500l
DEF/AdBlue capacity	62.5l
Operating weight	39,883kg
Ground bearing pressure	10.5 PSI

Work ranges		
A	Max reach	11,220mm
B	Max reach on ground	11,010mm
C	Max depth	7,590mm
D	Max depth 2.44m level	7,425mm
E	Max vertical wall depth	5,510mm
F	Max cutting height	10,370mm
G	Max dumping height	7,140mm
H	Min front slew radius	4,275mm

## Specifications of the Volvo EC380EL

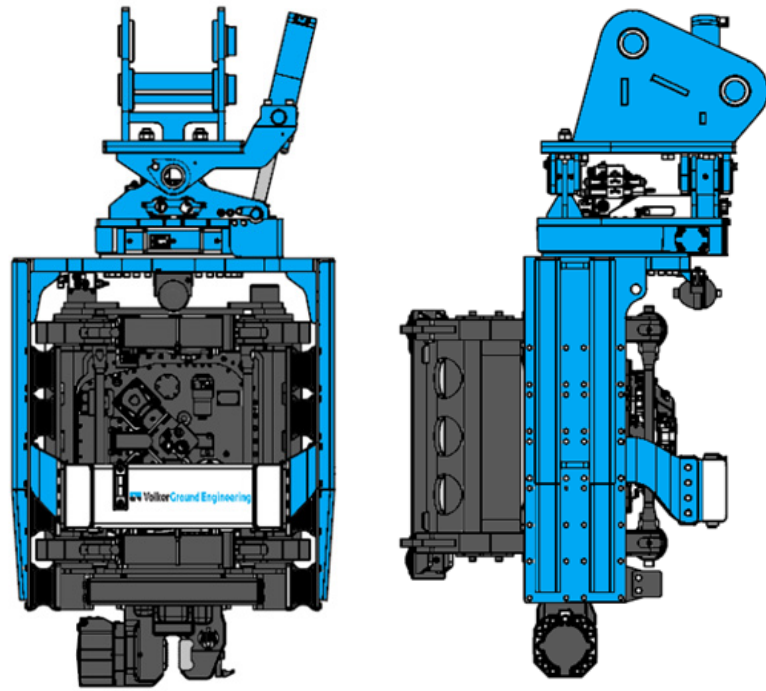




## Specifications of the Movax SG-75v

Suitable piles	
Length and weight	6m x 2,800kg 8m x 2,300kg 12m x 1,900kg 16m x 1,300kg
Pile sections	
Sheet piles	Width - 400 - 1,200mm Depth - 265mm
Other pile sections	
H-beams	H180 - H500
Timber piles	160 - 420mm
Timber piles	430 - 600mm
Tubular steel piles	88.9 - 762mm

Movax SG-75v technical data	
Weight	3,750kg
Height	2,615mm
Depth	1,115mm
Width	1,270mm
Frequency	2,300 - 3,000 1/min
Eccentric moment	7.6kgm
Max centrifugal force	750kN



## Specifications of the 35,000 max earth drill

35,000 max earth drill technical data	
Torque range	20,510 - 35,323 Nm
Oil pressure range	180 - 310 Bar
Oil flow range	80 - 225 lpm
Speed range	11 - 31 rpm
Unit weight	442 k
Output shaft std	110mm (4.33") Square
Output shaft opt	100mm (3.94") Square 130mm (5.125") Square

